

Introducing **The Hub for Child Labour Prevention and Remediation** In The DRC

Human rights risk management
that creates long-lasting
impact for children in artisanal
cobalt mining communities

Information Deck 2025

THE HUB 
FOR CHILD LABOUR PREVENTION AND REMEDIATION


March 2025

www.clrhub.org

Implemented by:

THE CENTRE
FOR CHILD RIGHTS AND BUSINESS

Supported by:

 **Save the Children**

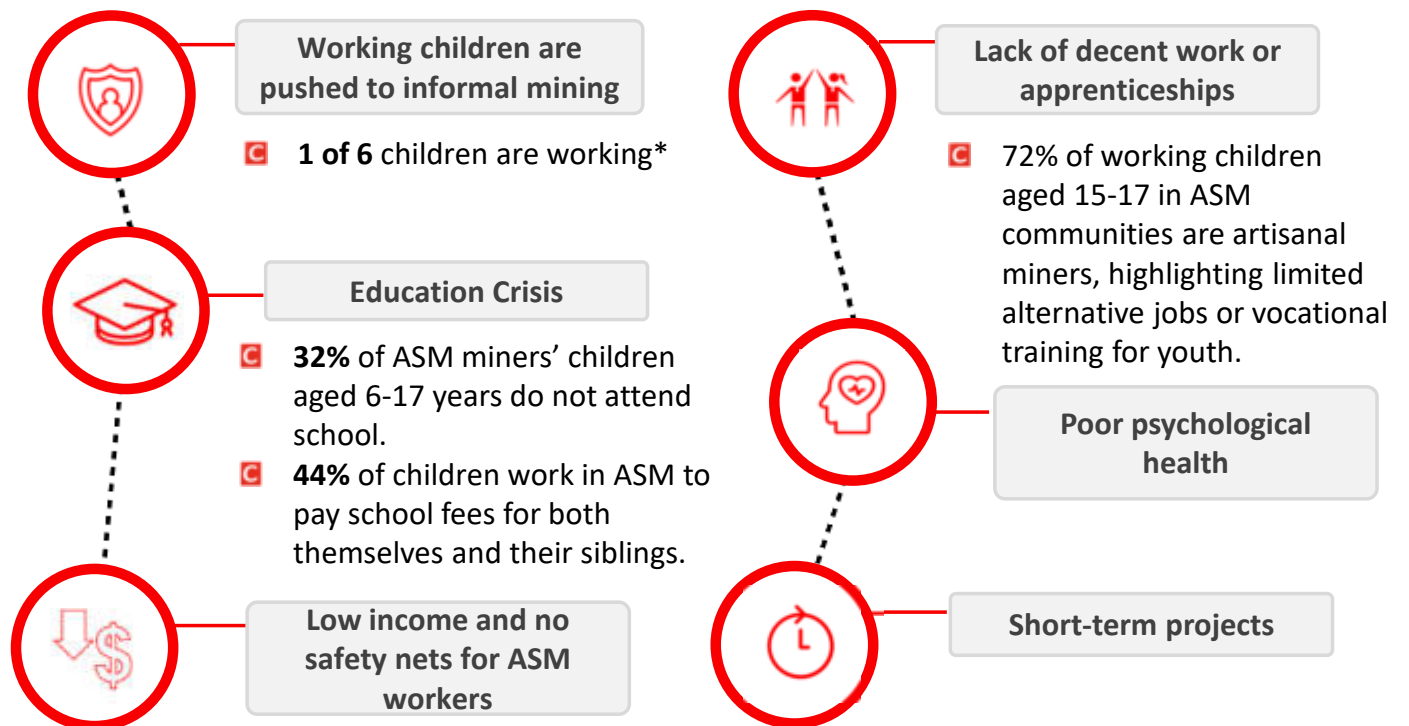
WHY A CHILD LABOUR REMEDIATION HUB IN THE DRC?

In 2021, Save the Children and The Centre for Child Rights and Business conducted a study on **“Opportunities for Businesses to Promote Child Rights in Cobalt Artisanal and Small-Scale Mining”**.

The study found that **children are working in extremely hazardous child labour in cobalt ASM communities** and are facing numerous challenges.

In 2021, Save the Children and The Centre for Child Rights and Business conducted a study on “Opportunities for Business to Promote Child Rights in Cobalt Artisanal and Small-Scale Mining”. The study found that children in cobalt ASM communities are facing numerous challenges as listed on the right.

Key challenges for children in Artisanal and Small-scale Mining (ASM)



In 2024, The Centre conducted another big study in a mining area with even fewer alternatives for livelihoods outside of mining. In this area, 35% of children were working and 19% of the children were working in mining-related work.

CHILDREN ARE EXPOSED TO THE WORST FORMS OF CHILD LABOUR

Most mining activities are hazardous, and the minerals expose children to radioactivity

Working children are exposed to dangers and hazards that jeopardise their health, well-being and even lives. A study by The Centre from 2024 shows that:



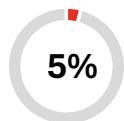
Of parents think the the mining-related work their child/ren does/do is **not safe**.



Of parents reporting that their child/ren have suffered **minor injuries*** from mining-related work



Of parents reporting that their child/ren have suffered **major injuries*** that needed medical care from mining-related work



Of surveyed parents reported that their child/ren have suffered **permanent physical damage** or have **died** from mining-related injuries

* Major injuries are those that led to medical care. However, given the barriers to access healthcare, we can assume that many "minor injuries" reported by parents are also severe, but the families cannot seek treatment for the child(ren).



WHY SHOULD BUSINESSES ENGAGE TO ADDRESS CHILD LABOUR IN ASM?

Engaging is the only way to meet due diligence obligations in a way that creates positive, long-term impact for children and their families in vulnerable mining communities.



ADDRESS CHILD LABOUR

Remediation and long-term prevention of child labour. Our programmes deliver **immediate and tangible impact for children** that have experienced or are at risk of ending up in child labour in ASM.



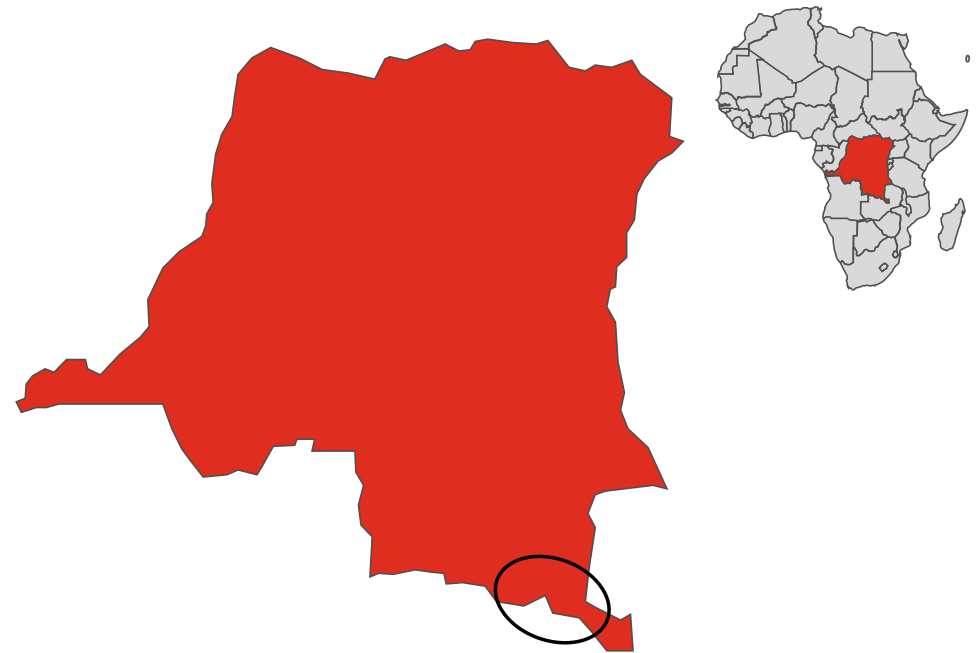
REDUCE SUPPLY CHAIN RISK

It is nearly **impossible to ensure no ASM cobalt from DRC enters global supply chains** and companies should assume that their supply is associated with the worst form of child labour.



A JUST TRANSITION

Businesses play a key role in ensuring that workers, and communities affected by resource extraction are not left behind. That ASM workers and their children have **access to decent labour conditions and sustainable livelihoods**.



The DRC accounts for **70%** of global cobalt production, with **10-30% sourced from ASM**. The mining is primarily happening in the south-east, notably in the province of Lualaba where The Hub is operating.

WHAT DOES THE CHILD LABOUR REMEDIATION HUB IN THE DRC OFFER BUSINESSES?

Addresses key gaps in current child labour prevention and remediation work and supports companies with due diligence obligations



Break the cycle for the most vulnerable kids – they need support today!



Most projects so far have been short-term – we **need longer-term commitments** to children in ASM communities.



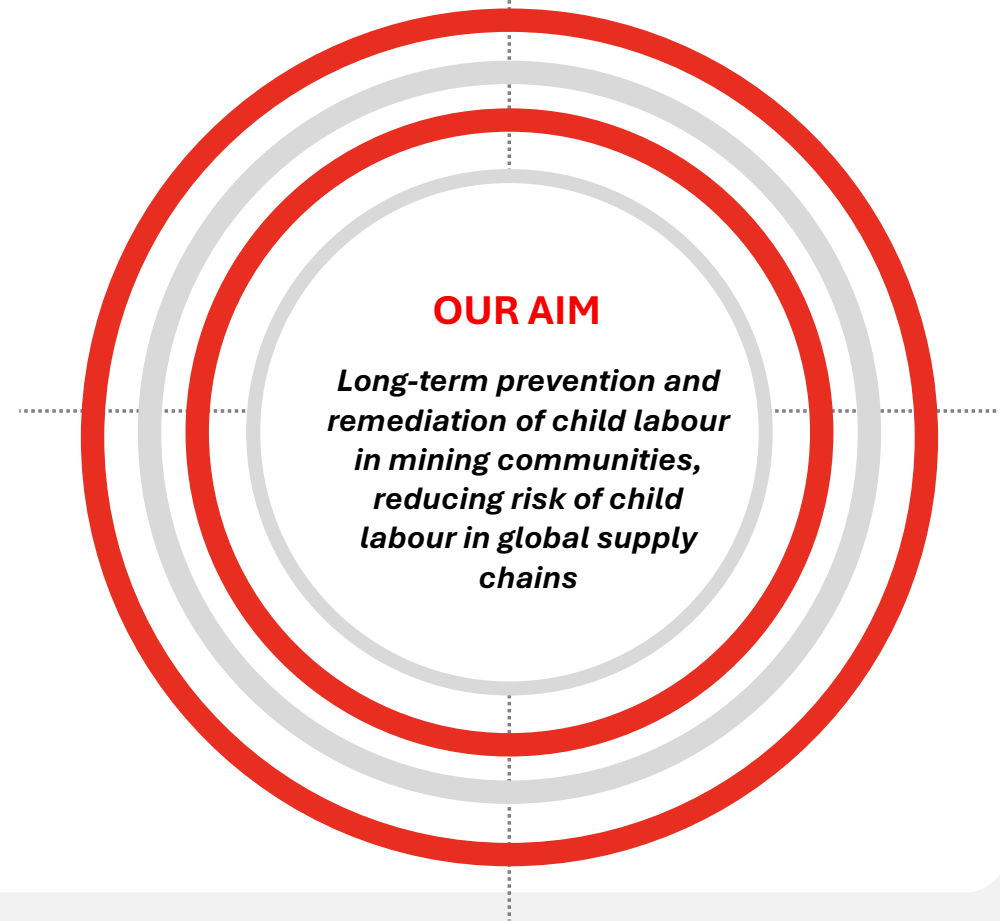
We **create strong local networks** that can **drive the process and engage in remediating cases** who need immediate support and work on **longer-term preventative mechanisms** with the government and local civil society organisations.



One of The Hub's case managers interviewing a child
© The Centre for Child Rights and Business, 2024

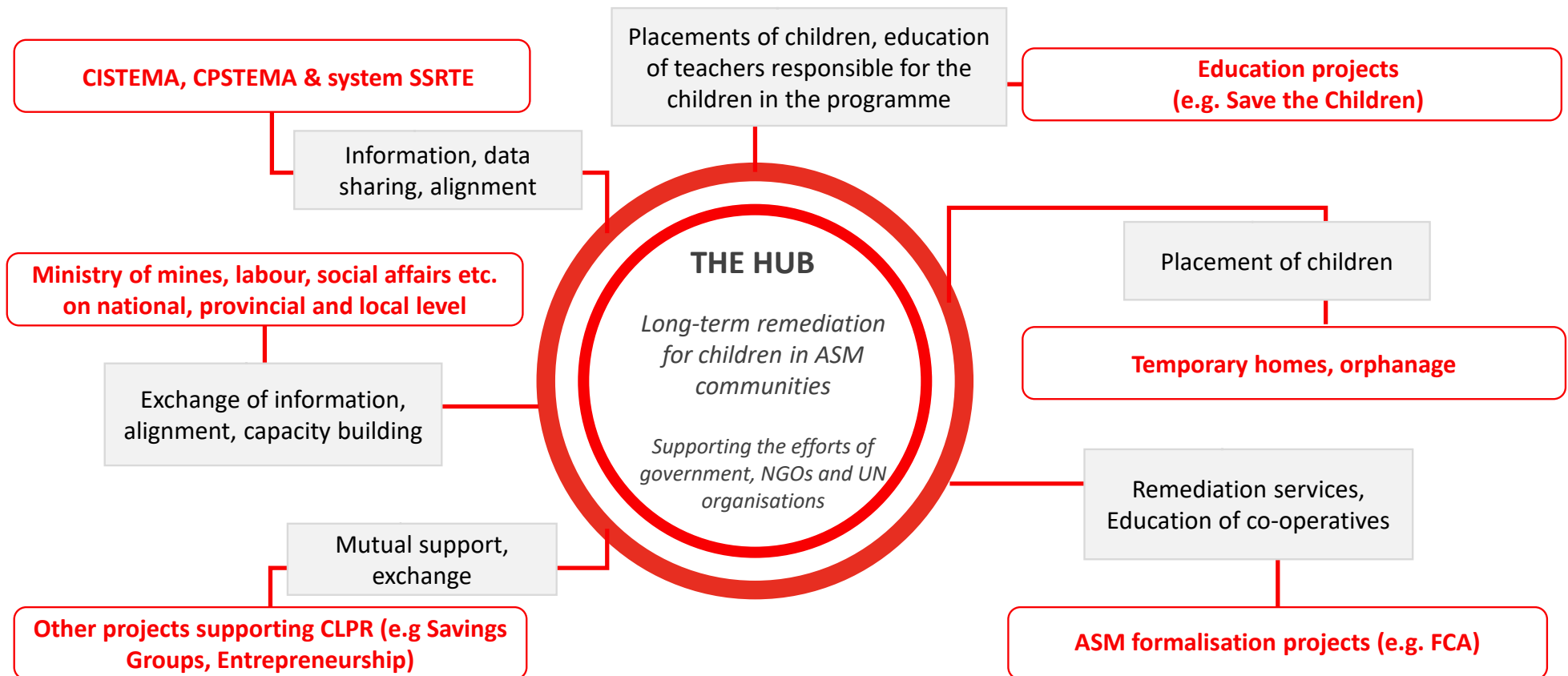
OBJECTIVES OF THE CHILD LABOUR ACTION HUB

The Hub is facilitating a collaborative approach to address child labour and reduce supply chain risk



THE HUB'S NETWORK TO SUPPORT INTEGRATION, SUSTAINABILITY AND SCALE

The Hub is supporting system strengthening and integration by aligning with government strategies and is working towards scaling impact through collaboration with other initiatives on the ground.



SUPPORTING LONG-TERM CHILD LABOUR REMEDIATION

Why is it needed?

Most CLR programmes only deliver short-term impact

Children often return to the mines when the programmes end

KPIs:

- No. of children integrated into The Hub's CL remediation programme
- No. of children who completed the programme successfully
- No. of remediation months provided
- No. of case managers trained
- No. of accredited case managers
- No. of local CSOs collaborating with the CLR Hub

Long-term solutions that are tailored to children's needs and ensure sustainable positive impact for children

KEY ELEMENTS

- The children complete compulsory education and/or enroll into a vocational education programme
- Support children and families with a living stipend and tuition
- Consult the child's family on the household economy and savings

LENGTH

- Age of the child: until he/she reaches the age of 16
- Length of the selected education/training programme: until they are 18 years old with sufficient funding
- Capacity and interest of the child
- Support from the funder and parents

COST

- Tuition fee until the age of 16 or education/training programme is complete (until they're 18)
- Living costs until he/she turns 16 years old
- Remediation cost for child protection issues (e.g. temporary homes for left-behind children)
- Service fee for local case manager and The Centre
- Other costs (e.g. medical exam)

THE HUB PILOT PHASE AND BEYOND



Photo: Cecilia Tiblad Berntsson, The Centre

Each child has a dedicated case manager that will support their education and development until the age of 16 (minimum working age in the DRC) including paying school and tuition fees and monthly living stipends to keep them out of work.

2023



20

children integrated in long-term child labour remediation

6

case managing organisations working with The Hub

13

junior case managers, out of which 9 are actively managing cases

2024



43

children integrated in long-term child labour remediation

14

Siblings receiving educational support

25

Junior case managers and 4 accredited case managers (to train & guide junior case managers)

KAMIA'S STORY

"The child worked well and had passed her end-of-year exams with good grades. She came 2nd in her class with 73% passing scores. This is very encouraging for this child who is adapting well to studies after having experienced such a long period of dropping out of school."
Kamia's teacher



September 2022: 12-year-old Kamia is identified at the Kasulo mine, where she has been working for 2 years washing minerals. Her parents had left her to live with her aunt, but she was no longer welcome there and had to take care of herself.



2022-2023: Kamia was integrated in The Hub's remediation programme. She was reintegrated into school, assigned a case manager, provided with a safe place to stay and a living stipend. She progressed well in class.



March - November 2023: The case manager, with support from The Hub, managed to find Kamia's parents and step by step, the child was reunited with her family in close collaboration with the Department for Social Affairs.



December 2023: Kamia lives with her family in Kapata District, and they receive support to keep Kamia in school. She is enrolled in primary school at the Kabulungu Institute – a partner school of a Save The Children education project.

HUB BENEFITS: WHY SUPPORT THE DRC CHILD RIGHTS ACTION HUB?

Cobalt is essential to the green transition, powering electric vehicles (EVs), smartphones, laptops, and renewable energy storage. The DRC produces about 70% of the world's cobalt, with artisanal and small-scale mining (ASM) accounting for 15–20% of production. Despite challenges in tracing cobalt beyond the smelter level, ASM cobalt is likely present in global supply chains across multiple industries.

By investing in the DRC Hub, companies can take consistent action against child labour in cobalt ASM mining and create real change, all while protecting their supply chains and reputations.



THE HUB

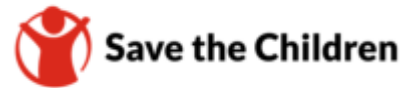


FOR CHILD LABOUR PREVENTION AND REMEDIATION

Implemented by:

THE CENTRE
FOR CHILD RIGHTS AND BUSINESS

Supported by:



Website: www.clrhub.org

info@childrights-business.org